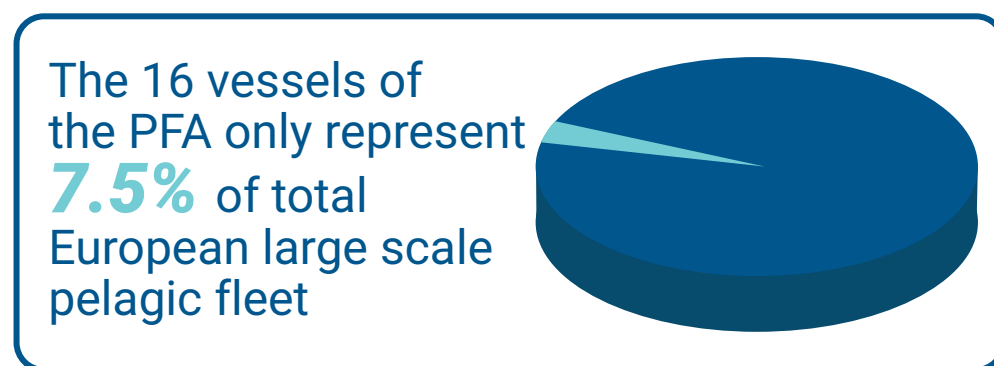
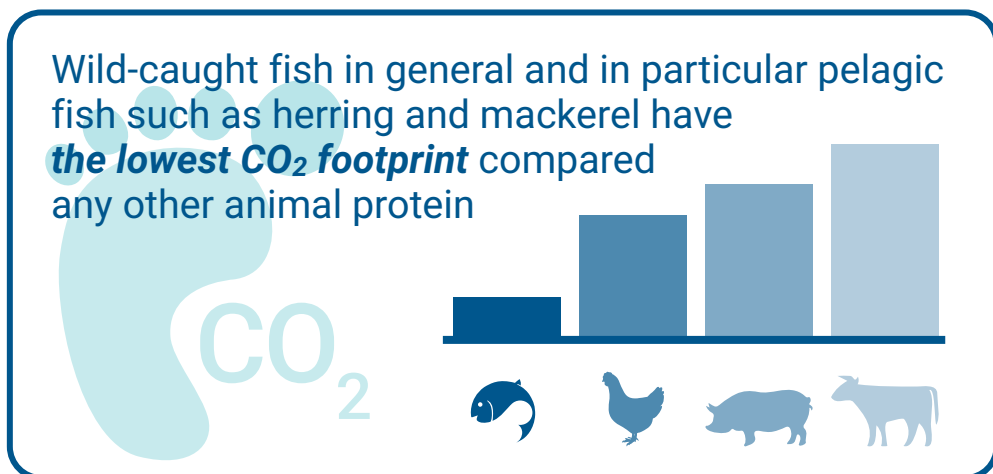
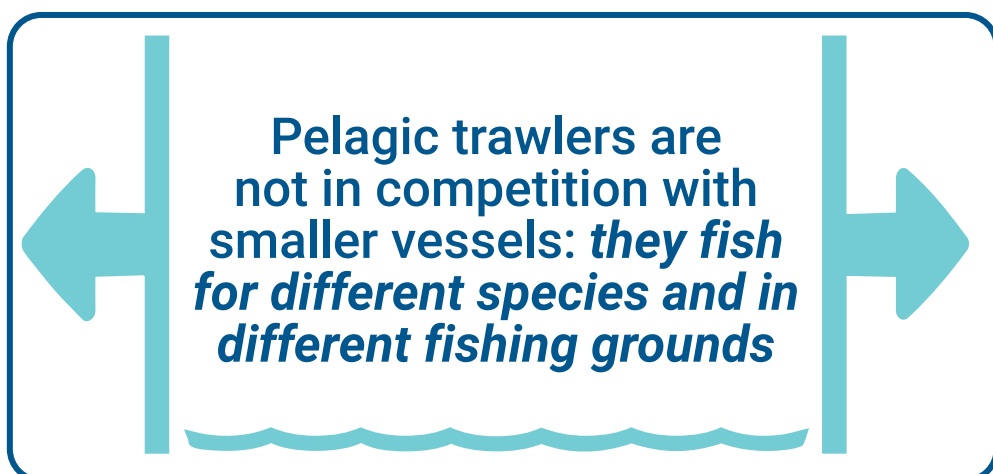
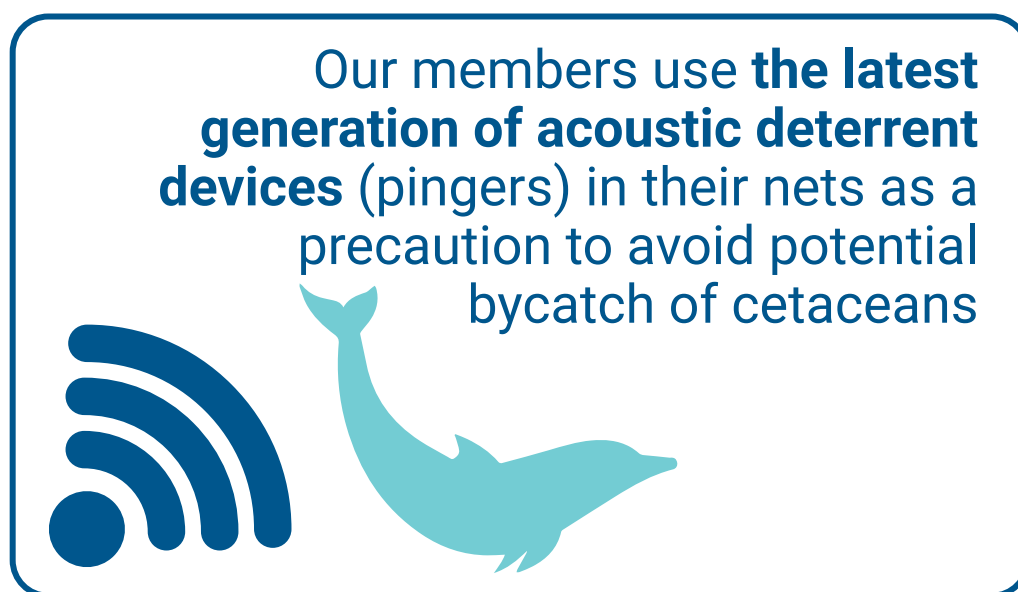
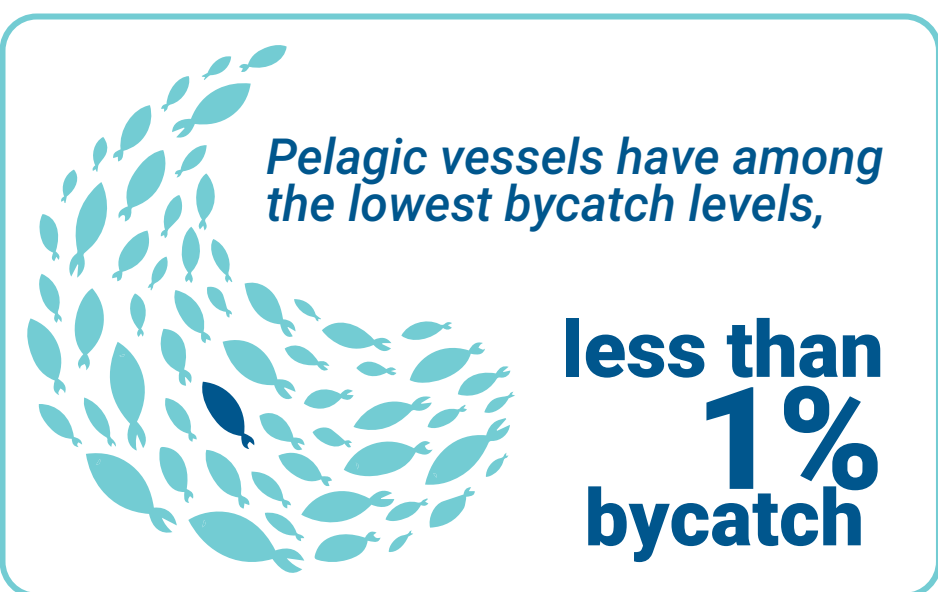
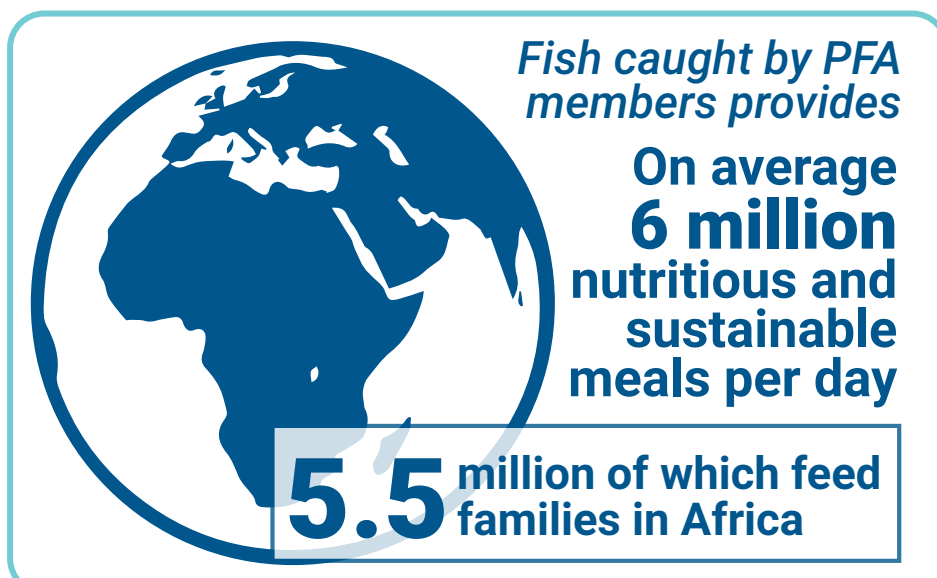
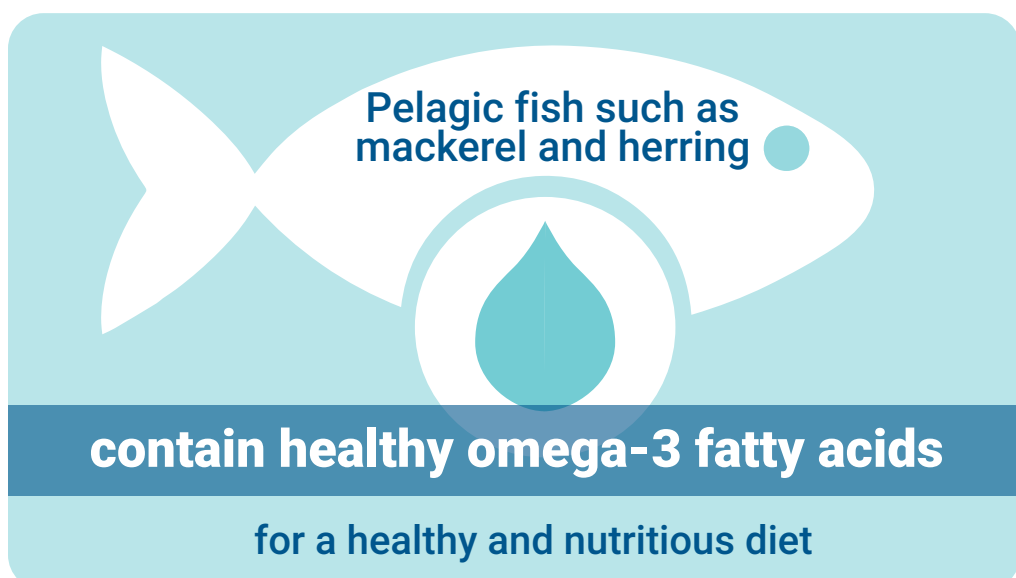
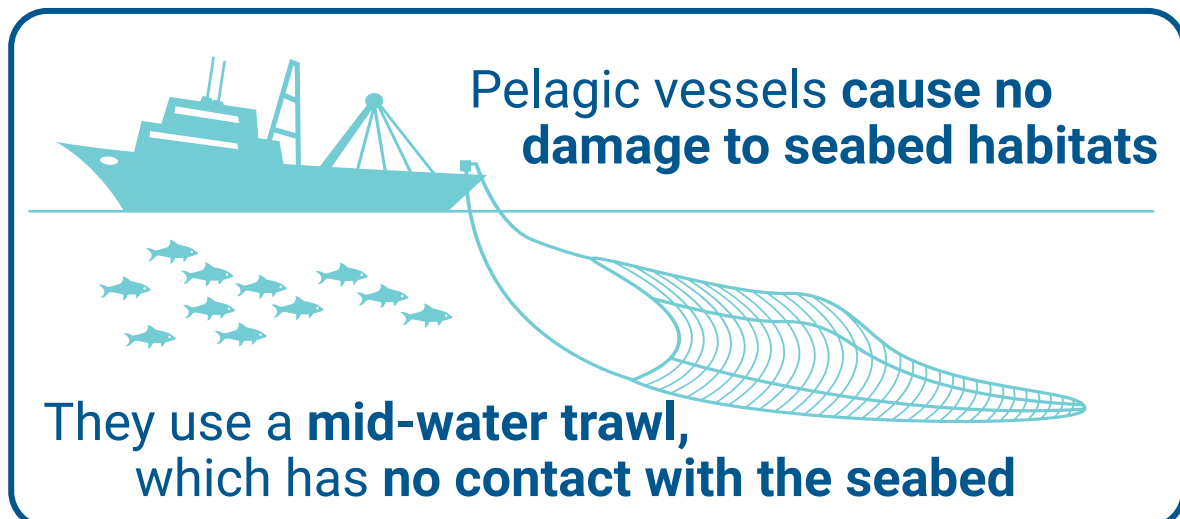
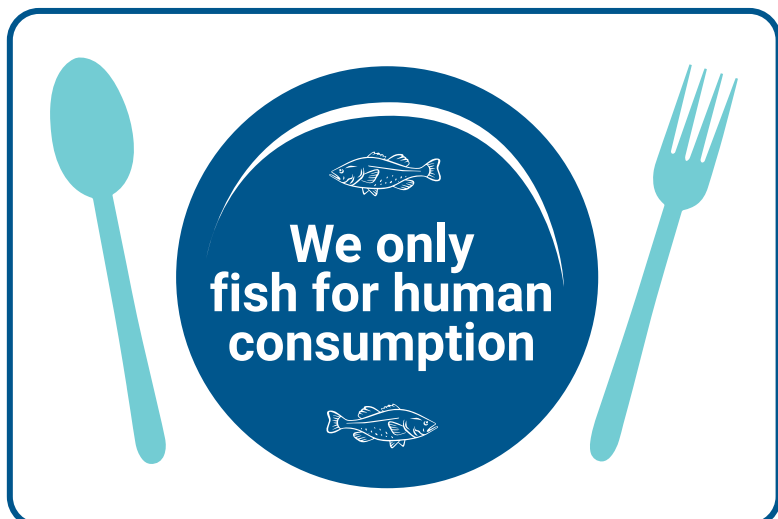


PELAGIC FISHING = SUSTAINABLE FISHING



Members of the PFA are committed to making an active contribution to fishery research and are active partners in:

- *International Council for the Exploration of the Sea (ICES)*
- *International Coalition of Fisheries Associations*
- *International Maritime Organisation (IMO)*
- *Long Distance Advisory Council (LDAC);*
- *Pelagic Advisory Council (PELAC)*
- *Europêche*
- *European Association of Fish Producer Organisations (EAPO)*
- *International Labour Organisation (ILO)*
- *Food and Agriculture Organisation of the United Nations (FAO)*

We also collaborate with several NGOs: WWF | North Sea Foundation | Pew | Seas at Risk | Greenpeace (MoU) and marine institutes:

- *Wageningen Marine Research (Netherlands)*
- *Thünen Institute (Germany)*
- *CEFAS and Marine Scotland Science (UK)*
- *DTU Acqua (Denmark)*
- *Marine Institute (Ireland)*

